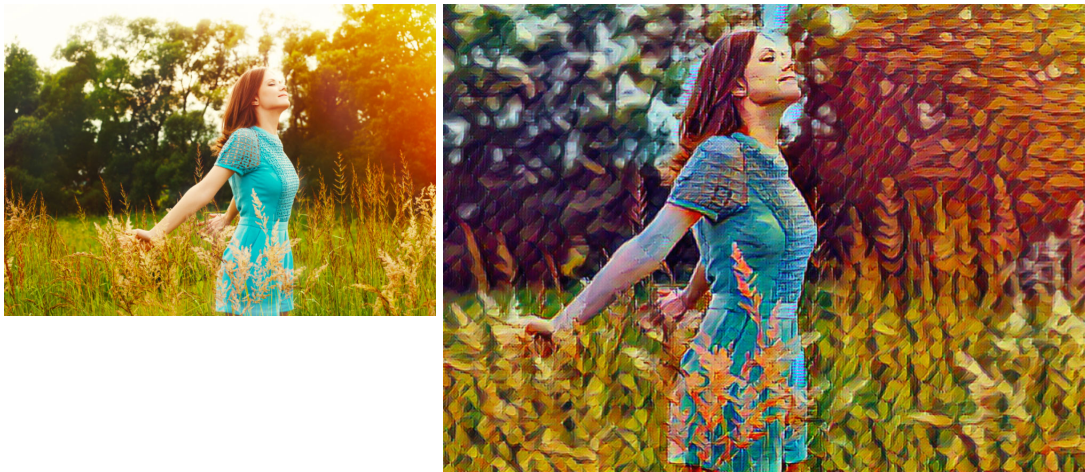


Akrilic User Guide



Akrilic is photo software that helps you transform your photos into art. Each result is unique, based on the guidance and customizations you provide. Follow a series of easy steps that let you set the focus, mood, and adjust the photo before you apply one of the many art-inspired transformative effects.



Akrilic lets you transform photos (left) into original works of art (right).

In this guide, you will learn about

- **Akrilic workflow overview**, page 1
- **Akrilic workspace**, page 2
- **Importing photos**, page 3
- **Tools and effects**, page 4
- **Step-by-step tutorial**, page 6

Akrilic workflow overview

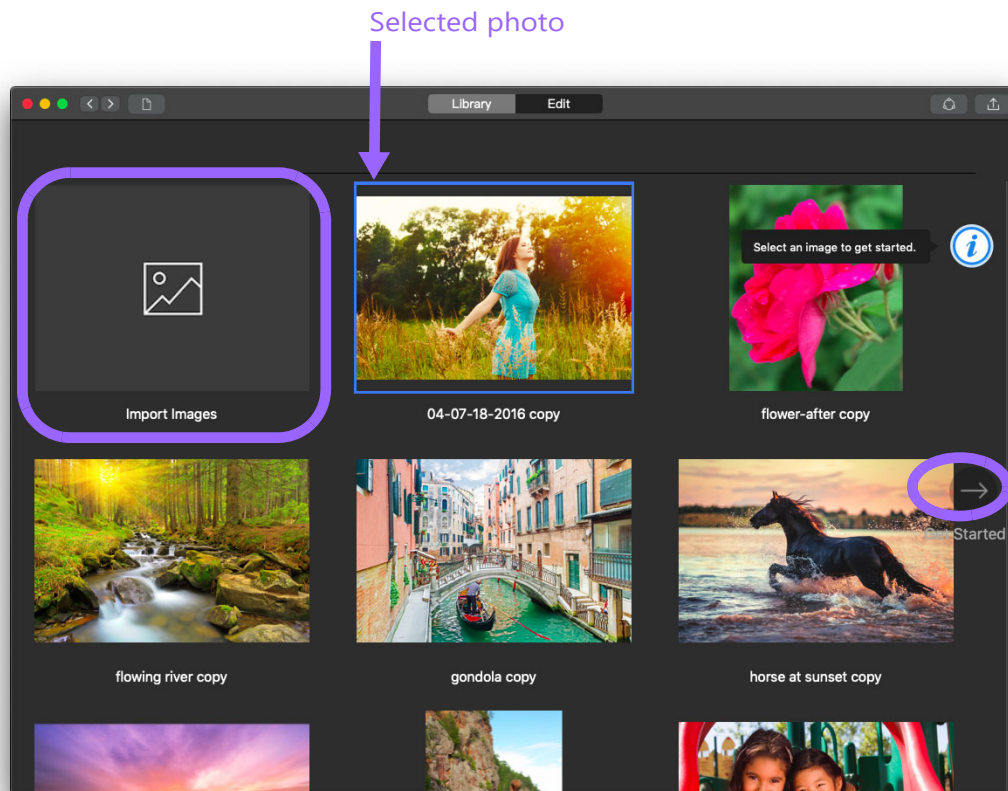
The following steps outline the basic workflow in Akrilic.

- 1 **Import** some photos into the Akrilic Library.
- 2 Select the photo you want to work with.
- 3 Set the focus area for your photo (unselected area is the “rest of image” zone). This lets you control where Mood and Adjustment changes are applied.
- 4 **Crop** or **Rotate** your photo.
- 5 Apply a **Mood**. Adjust the **Strength** of color tint to get the feel you want.

- 6 Apply an **Adjustment**. Add one or more adjustment effects to the entire image or to specified zones to soften focus, saturate colors, adjust contrast, and more.
- 7 Apply an **Art Style** or **Photo Style**.
- 8 Save your artwork!

Akrilic workspace

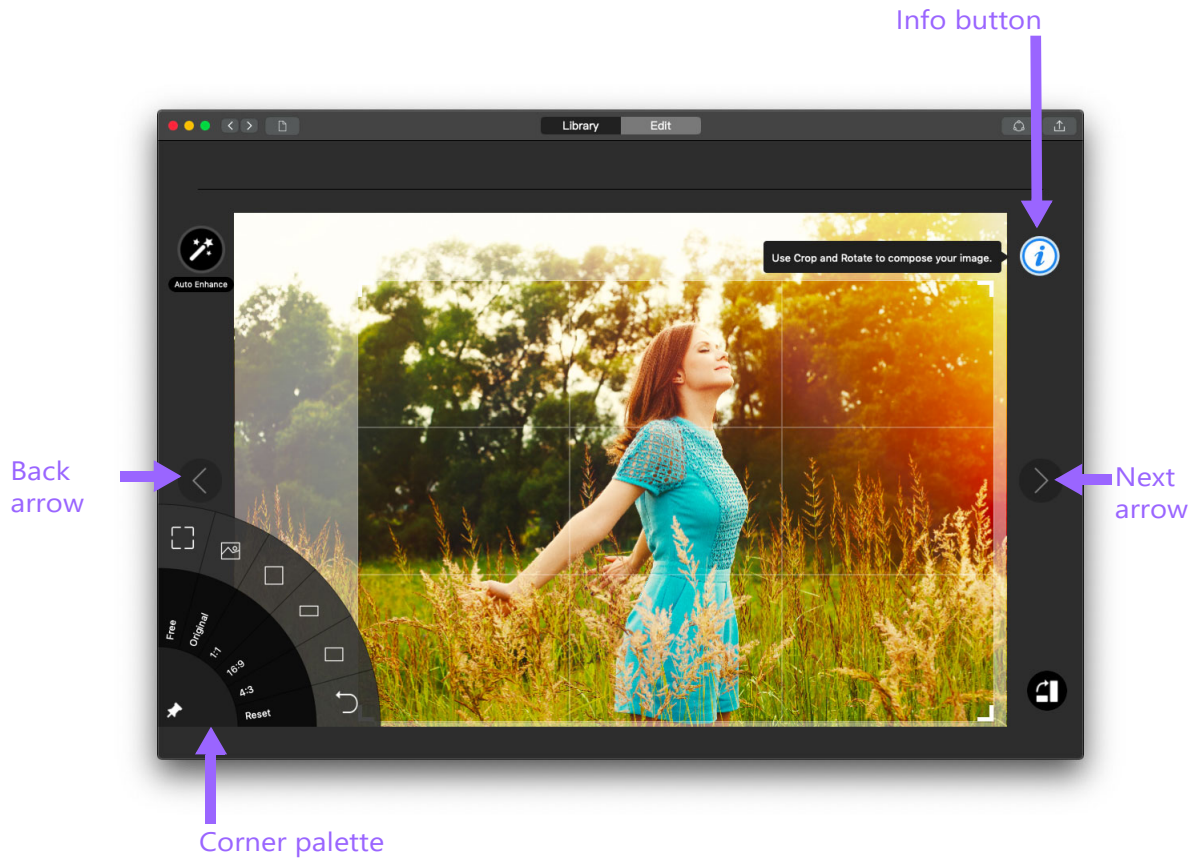
The Akrilic workspace consists of a **Library** and the main **Edit** workspace that changes as you follow the workflow.



*The **Library**: You can click the **Import Images** thumbnail to import photos. After you import the photos, choose the photo you want to use. A blue outline appears around the photo that you select. You can then click the **Get Started** arrow (circled) to move on to the next step.*

The **Edit** workspace changes as you follow the workflow. Some key elements to look for include:

- **Corner palettes**: Hovering over an icon or thumbnail in the bottom corners reveals a set of tools or set of thumbnails that let you modify your photo.
- **Info button**: The info button lets you display infotips about the current step.
- **Next arrow** and **Back arrow**: Lets you go to the next step or return to a previous step.



Edit: The Edit workspace changes as you follow the workflow

Importing photos

You can import the following image formats into your Akrylic **Library**:

- JPEG
- PNG
- TIFF

To import photos

- 1 Open the Akrylic app, and click the **Library** button at the top of the application window.
- 2 In the **Library**, click the **Import Images** thumbnail, and navigate to the photos that you want to import.

The supported images are added to the **Library**.

Tools and effects

Akrilic lets you use the following tools and effects to create your artwork. The tools and effects are available only for the corresponding step in the workflow. Use the **Next** and **Back** arrows to access any page in the workflow.

Selection

Selection tools let you create zones: focus area, and rest of image. By default, **Smart Selection** is active (when you hover over the image, a blue overlay indicates the zone detected). A light colored overlay appears over unselected areas; selected areas display with no overlay. You can use any of the following selection tools from the corner palette:

- **Smart Selection**: Auto-detects zones as you hover over the image (blue overlay). Click to select the detected zone.
- **Selection Brush**: Lets you select zones manually by dragging over the image. Use the **Brush Size** slider to adjust the brush.
- **Eraser Tool**: Lets you remove areas from a selection by dragging over the image. Use the **Brush Size** slider to adjust the eraser size.
- **Invert Selection**: Let you invert the selected (area of focus) and unselected areas (rest of image).
- **Clear Selection**: Removes all selections.
- **Zoom** tools: The zoom slider lets you zoom in or out of the image for more precise selection. To pan, hold Spacebar while dragging on the image.

Crop and Rotate

You can improve your composition by cropping and rotating the image. In addition, you can access an **Auto Enhance** feature to improve the look of your photo.

- **Crop**: Accessed from the lower-left corner palette, you can choose between **Free**, **Original**, **1:1**, **16:9**, and **4:3** crop ratios. Use **Reset** to undo cropping. On the image, drag a crop handle to set the crop size and position.
- **Rotate**: By default, you can free rotate the photo by dragging in the area outside the image (the cursor displays curved double-arrows). In addition, the lower-right corner palette lets you choose between **Rotate Left** (90 degrees) and **Rotate Right** (90 degrees). Use **Reset** to undo rotation.

Mood

Mood effects let you apply a color tint for your image to change the look and feel of the image. In addition, some effects also sharpen or blur the image.

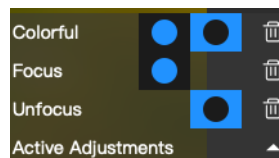
- **Mood** thumbnails: Click a thumbnail from the left corner palette to apply a color tint effect.
- **Strength**: Adjusts the intensity of the effect.
- **Apply to focus area**: Applies the effect to the selected area
- **Apply to rest of image**: Applies the effect to the unselected area
- **Apply to image**: Applies the effect to the entire image.
- **Clear**: Removes the effect.

Adjustments

Adjustment effects let you modify your image in a variety of ways. For example, you can apply a blur to areas, lighten or darken areas to get a subtle vignette effect, increase color saturation, contrast, and more.

Layering adjustments

You can layer adjustments. When you **Add** an adjustment, it is added to the **Active Adjustments** list. The list lets you see what is applied and where it is applied (zones). By hovering over an item in the list, you can access a slider that lets you modify the strength of the effect. You can also remove an adjustment by clicking the Trash can icon in the list.



The blue icons in the Active Adjustments indicate where the adjustment is applied. In the example, Colorful is applied to the entire image, Focus is applied to the selection, and Unfocus is applied to the unselected "rest of image" zone.

- **Adjustments**: Click a thumbnail from the left corner palette to apply the corresponding effect.
- **Strength**: Adjusts the amount of the adjustment.
- **Apply to focus area**: Applies the effect to the selected area
- **Apply to rest of image**: Applies the effect to the unselected area
- **Apply to image**: Applies the effect to the entire image.
- **Add**: Commits the effect and adds it to the **Active Adjustments** list in the lower right corner. **Note**: If you don't click **Add**, the effect(s) are in preview mode only (not saved).
- **Clear All**: Removes all adjustments. To clear one effect, in the **Active Adjustments** list, click the trash can icon for the effect.

Art Styles and Photo Styles

Art Styles and **Photo Styles** are the final step in transforming your photo into artwork. **Art Styles** apply paint and drawing styles, inspired by artists and masterworks. **Photo Styles** are classic photography styles that elevate your photo with professional-styles effects such as black and white, and other retro looks. You cannot combine styles (can apply only one).

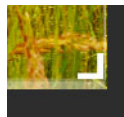
- **Art Style** or **Photo Style**: Click a thumbnail from a corner palette to apply the corresponding style.
- **Custom Import**: Match the current image to a photo of your choice by choosing this option from the **Photo Style** palette.
- **Strength**: Adjusts the amount of the style.
- **Clear**: Removes the style.

Step-by-step tutorial


You can transform your photo into art in Akrilic by following the tutorial below. Refer to the other sections of the guide for details about the settings and options.

How to create photo art in Akrilic

- 1 Open Akrilic, and in the **Library**, select the image that you want to use.
- 2 Click the **Get Started** arrow to open the **Edit** tab and to view the Selection page.
- 3 Hover over the area of the image that you want to set as your focus area. A blue overlay indicates a smart selection. Click the overlay to apply the selection to the image. To refine the selection, choose a tool from the left corner palette.
- 4 Click **Next** to go to the Crop and Rotate page.
- 5 If you want to crop the image, drag any of the crop handles at the corners of the image. You can choose a specific crop ratio from the left corner palette.



- 6 If you want to straighten the image, drag outside the right or left edge of the image to rotate the image. A curved arrow cursor appears when the rotate mode is active. You can rotate right or left by 90 degree increments by choosing an option from the right corner palette.
- 7 Click **Next** to go to the Mood page.
- 8 If you want to apply a color tint to set a mood for your image, click the left corner palette, click a **Mood** thumbnail, choose an option for where to apply the tint, and adjust the **Strength** slider.
- 9 Click **Next** to go to the Adjustments page.

- 10 If you want to adjust the image, click the left corner palette, click an **Adjustment** thumbnail, choose an option for where to apply the adjustment, and adjust the **Strength** slider.
- 11 Click **Add** to add the adjustment to the **Active Adjustments** list.
- 12 When you are finished adding the adjustments you want, click **Next** to go to the Styles page.
- 13 Choose an **Art Style** (left corner palette) or **Photo Style** (right corner palette) by clicking a style thumbnail, and adjusting the **Strength** slider.
At any point you can click the **Clear** button to remove a style and try another one.
You can also use the **Back** button to modify any of your previous settings in order to produce different results.
- 14 Click the **Save** button  to save your artwork.

Copyright © 2019 Corel Corporation. All rights reserved.
Roxio® Akrilic User Guide

INFORMATION IS PROVIDED BY COREL ON AN "AS IS" BASIS, WITHOUT ANY OTHER WARRANTIES OR CONDITIONS, EXPRESS OR IMPLIED, INCLUDING, BUT NOT LIMITED TO, WARRANTIES OF MERCHANTABILITY, SATISFACTORY QUALITY, MERCHANTABILITY OR FITNESS FOR A PARTICULAR PURPOSE, OR THOSE ARISING BY LAW, STATUTE, USAGE OF TRADE, COURSE OF DEALING OR OTHERWISE. THE ENTIRE RISK AS TO THE RESULTS OF THE INFORMATION PROVIDED OR ITS USE IS ASSUMED BY YOU. COREL SHALL HAVE NO LIABILITY TO YOU OR ANY OTHER PERSON OR ENTITY FOR ANY INDIRECT, INCIDENTAL, SPECIAL, OR CONSEQUENTIAL DAMAGES WHATSOEVER, INCLUDING, BUT NOT LIMITED TO, LOSS OF REVENUE OR PROFIT, LOST OR DAMAGED DATA OR OTHER COMMERCIAL OR ECONOMIC LOSS, EVEN IF COREL HAS BEEN ADVISED OF THE POSSIBILITY OF SUCH DAMAGES, OR THEY ARE FORESEEABLE. COREL IS ALSO NOT LIABLE FOR ANY CLAIMS MADE BY ANY THIRD PARTY. COREL'S MAXIMUM AGGREGATE LIABILITY TO YOU SHALL NOT EXCEED THE COSTS PAID BY YOU TO PURCHASE THE MATERIALS. SOME STATES/COUNTRIES DO NOT ALLOW EXCLUSIONS OR LIMITATIONS OF LIABILITY FOR CONSEQUENTIAL OR INCIDENTAL DAMAGES, SO THE ABOVE LIMITATIONS MAY NOT APPLY TO YOU.

Corel, the Corel logo, and Roxio are trademarks or registered trademarks of Corel Corporation and/or its subsidiaries in Canada, the United States and elsewhere. WinZip is a registered trademark of VAPC (Lux) S.a.r.L. All other product names and any registered or unregistered trademarks mentioned are used for identification purposes only and remain the exclusive property of their respective owners.

Product specifications, pricing, packaging, technical support and information ("specifications") refer to the retail English version only. The specifications for all other versions (including other language versions) may vary.